



desert conservation
PROGRAM
respect, protect and enjoy our desert!

Overview of the Desert Conservation Program's Occupancy and Covariate Sampling Projects

Rob Sutter

Science Advisor

Desert Conservation Program



desert conservation
PROGRAM
respect, protect and enjoy our desert!

Presentation Overview

- Background on Occupancy Sampling Project
- Background on the Covariate Sampling Project
- Summarize the outcomes of the two projects



desert conservation
PROGRAM
respect, protect and enjoy our desert!

Information for the Recovery of the Mojave Desert Tortoise

- Status and trends
- Habitat relationships
- Viable populations
- Connectivity within and between TCAs
- Translocation and augmentation
- Solar facilities
- Excessive predation
- Climate change



desert conservation
PROGRAM
respect, protect and enjoy our desert!

Two DCP Projects:

- **Occupancy Sampling Project**
 - Status and trends of populations
- **Covariate Sampling Project**
 - Habitat relationships



Occupancy Sampling Project

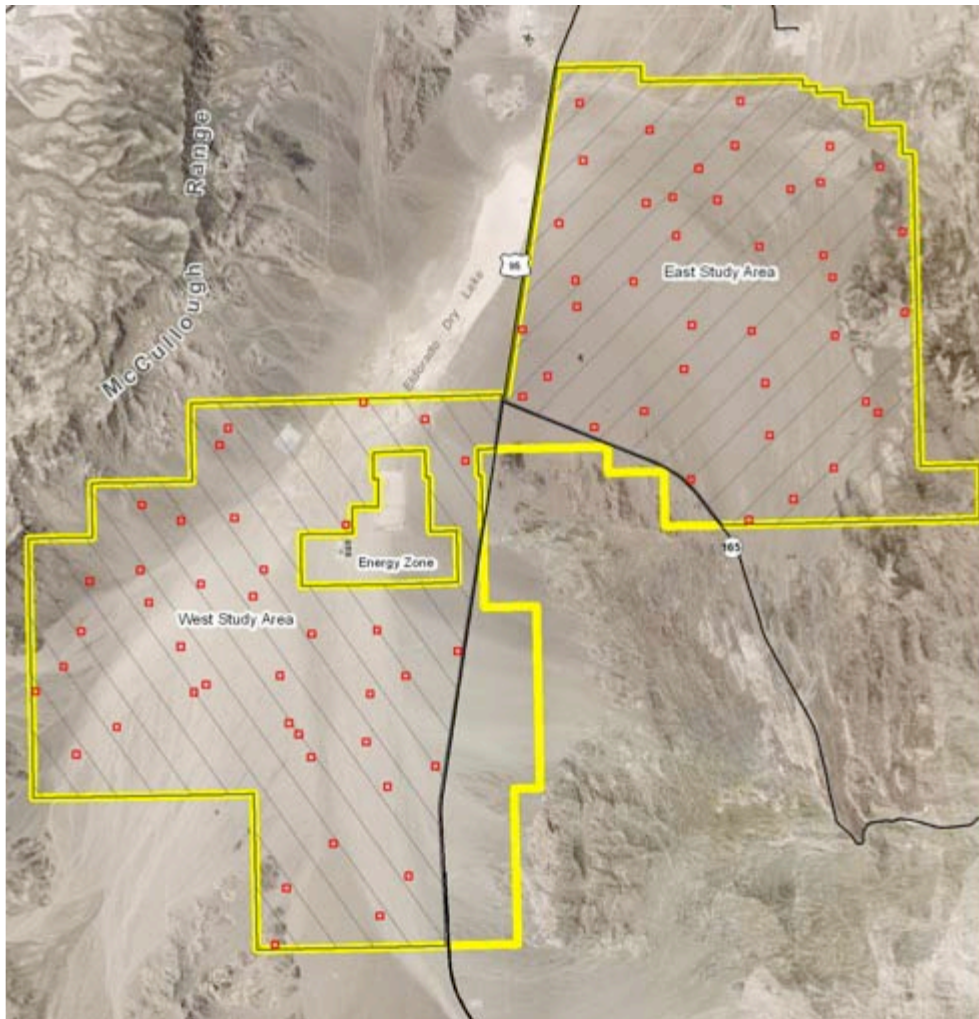
- Method for assessing status and trends
 - Alternative to line distance sampling
 - Potential of greater efficiency and statistical power at smaller scales over shorter timeframes
 - Identified in Revised Recovery Plan
 - 3 to 5 year pilot study
- Values for the BCCE
 - Assess status and trends of desert tortoise
 - Prioritize areas for habitat restoration/enhancement



Occupancy Sampling Project

- Estimates the proportion of habitat that is occupied
 - Presence of desert tortoise (live tortoises and active burrows)
 - Incorporates detectability (multiple visits to plots per season)
- Occurrence is not equivalent to abundance or density
- Probabilistic sampling design to select plots
- Plots allow correlation with other variables

Survey Plots for Occupancy Sampling



- 4 hectare plots
- Each study area has 40 survey plots (80 total)
- Plot placement: GRTS
- Sample size determined:
 - estimate of occupancy
 - detectability
 - number of surveys/year



Occupancy Sampling Project

- Data Collection
 - Plots surveyed 3 times during a season, 100% coverage
 - Sample season and time of day
 - Rotating time of day for each plot in each survey
 - Sign of an active plot
 - Live tortoises and active burrows
 - Other data collected
 - Carcasses, inactive burrows, predators, reptiles
- Analysis: Presence



Covariates Sampling Project

- Understand habitat relationships
- Values
 - Prioritize areas of BCCE for habitat restoration/enhancement
 - Predictive model of tortoise occupancy
 - From field data to remotely sensed data



desert conservation
PROGRAM
respect, protect and enjoy our desert!

Covariate Sampling Categories

- Vegetation
- Substrate
- Precipitation
- Disturbance and Habitat Alteration
- Management Action



Vegetation Covariates

- Cover of perennial shrub and succulent vegetation
 - Shade, food resources, burrow locations
- Shade cover of perennial shrub and succulent vegetation
 - Shade, burrow locations
- Ephemeral plant species cover and species richness
 - Food resources



Substrate Covariates

- Soil series and soil suitability for burrows
- Presence of petrocalcic horizon or duripan
 - Restrictive layers
- Total length of washes
 - All related to burrows



Other Covariates

- Precipitation
- Disturbance and Habitat Alteration
 - Distance to and density of linear disturbances
 - Distance to energy production and transmission facility sites
- Management Action
 - Distance to management actions



desert conservation
PROGRAM
respect, protect and enjoy our desert!

Covariate Sampling Project

- Data Collection

- Different method for each covariate

- Analysis

- Presence (AIC: Akaike's Information Criterion)

- Random Forests



Status

- Occupancy Sampling

- 2 years of data collection, initial analysis of data

- Covariate Sampling

- Vegetation – first year of data collection
- Soils – first assessment of soils
- Precipitation – data sources
- Remote Sensing – processing LiDAR and LANDSAT



desert conservation
PROGRAM
respect, protect and enjoy our desert!

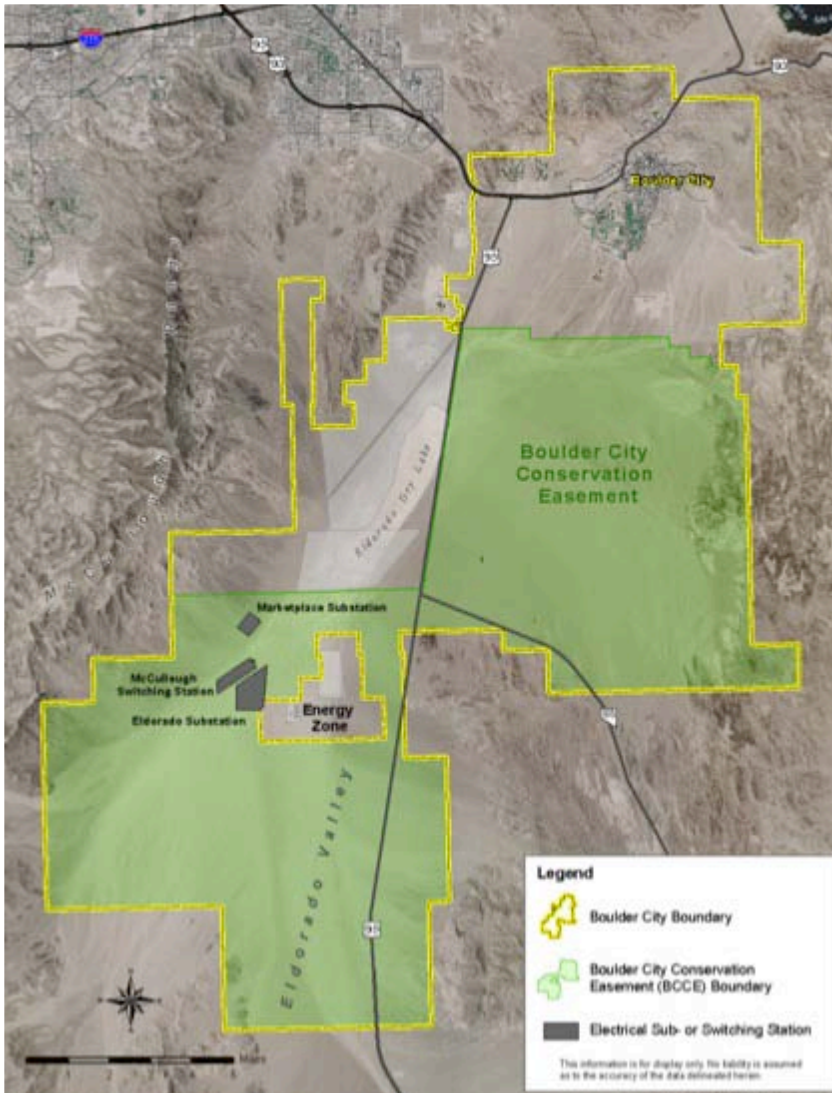
- Outcomes of the two projects
 - Potential alternative for status and trends
 - Focus habitat restoration and enhancement
 - Greater understanding of habitat relationships
 - Predictive model of tortoise occupancy
 - Protection
 - Translocation

A large tortoise, possibly a Galapagos tortoise, is the central focus of the image. It is standing on a rocky, uneven ground with sparse, dry grass. The tortoise's head is raised, and its shell shows distinct scutes. The background consists of tall, spiky green plants and a clear blue sky. A white speech bubble with a black outline is positioned in the upper left quadrant, containing the word "Questions".

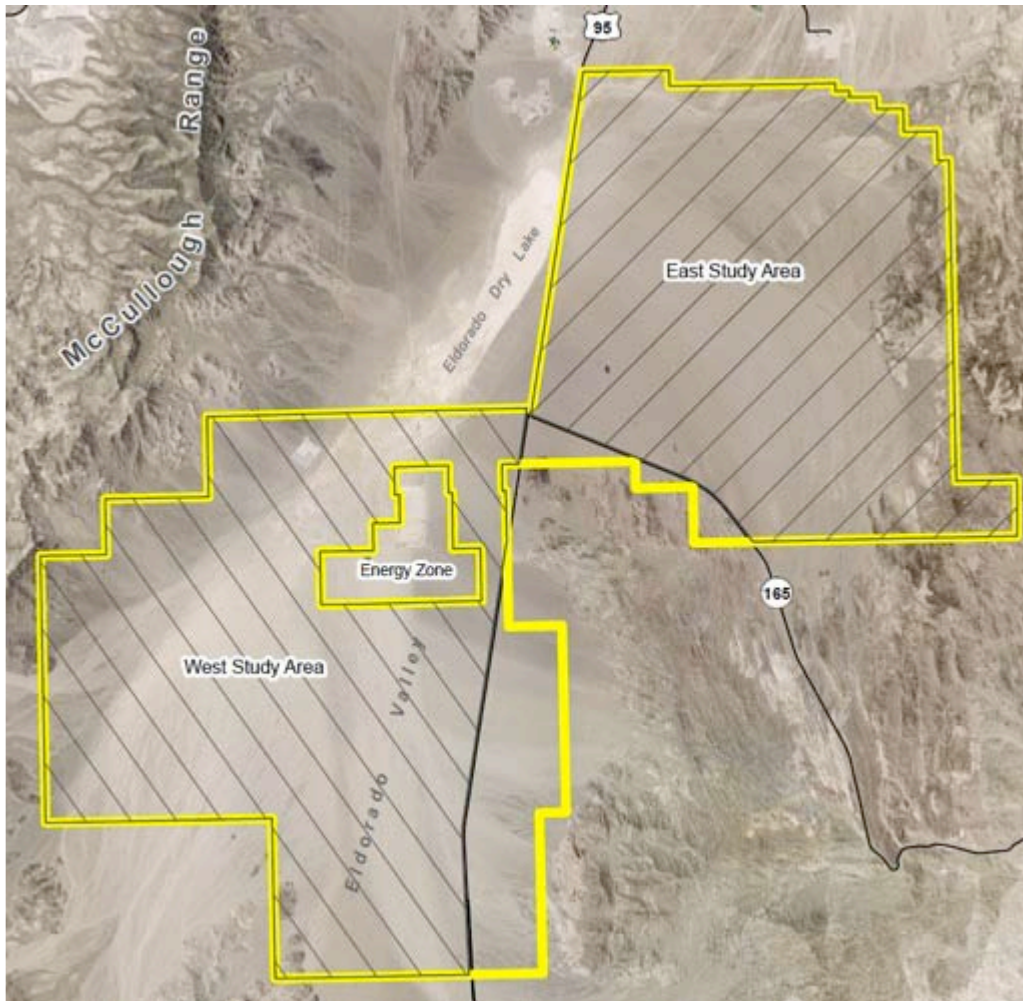
Questions

Project Location

- Boulder City Conservation Easement (BCCE)
 - 86,423 acres
 - Acquired for MSHCP to protect and manage desert tortoise



Study Area



- East Study Area
 - 37,593 acres
- West Study Area
 - 40,937 acres
- Excluded from study
 - Two areas isolated by roads
 - Energy facilities